

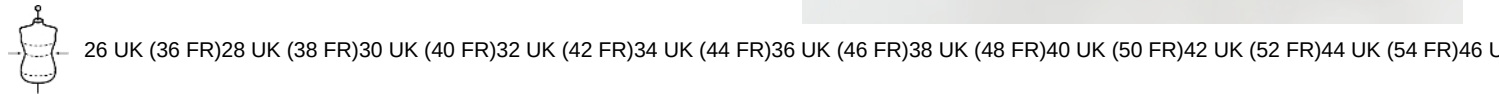


WK743

Men's recycled performance work trousers

- A workwear garment that is part of an eco-responsible approach.
- Reinforced seams on stress points.
- Easy-care and with lots of pockets, it is an essential garment for workers.

60% cotton and 40% recycled polyester. Wash at 60°C. Straight fit. 2 front pockets (bags made of the main material), 1 with ticket pocket. 2 gusseted hanging cargo pockets and flap with velcro fastening, 1 of which with 2 compartments and slots for tools, pen pocket on right side when worn. 2 gusseted back pockets with flaps and velcro fastening, hammer loop on the left when worn. Knee comfort foam integrated in a contrasting Cordura pocket (black for all colors) Expandable contrasting insert (except black colourway) in the crotch and behind the knees for greater resistance and perfect freedom of movement. Lower leg insert in Cordura with silver piping and 5-cm adjustable hem. Triple stitching on front + back crotch seams. Twin-needle stitching on sides and inside leg. Waistband with plastic buckle + adjustable loops thanks to elastic. Wide loop in the back of the waistband. Zip and button fastening (metal plastic-covered button). Detachable brand label.

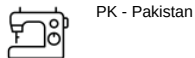


More information

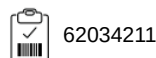
Logistic



Country of origin



Customs code



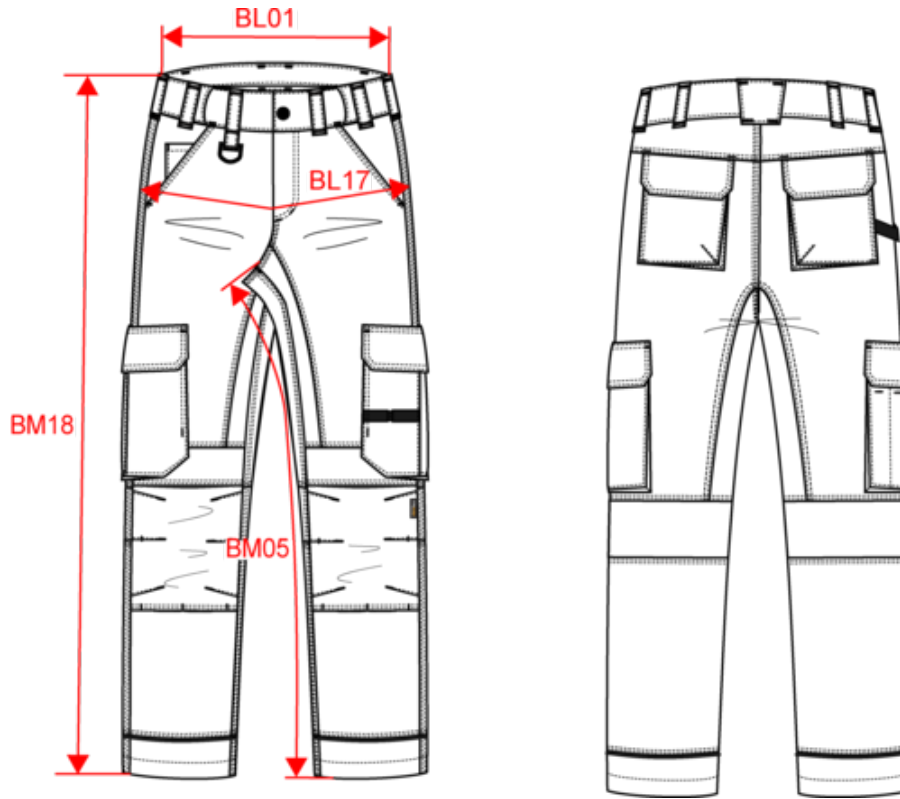
Washing instructions



WK743

Men's recycled performance work trousers

Dimensions (cm)





Measurements in cm	36	38	40	42	44	46	48	50	52	54	56	58
BL01 - 1/2 waist width (buttoned up and front band over back band)	38.00	40.00	42.00	44.00	46.00	48.50	51.00	53.50	56.00	58.50	61.00	63.50
BL17 - 1/2 hip width (measured parallel to waistband)	49.00	51.00	53.00	55.00	57.00	59.00	61.00	63.00	65.00	67.00	69.00	71.00
BM05 - Inseam length	80.00	80.00	80.00	80.00	80.00	80.00	80.00	80.00	80.00	80.00	80.00	80.00
BM18 - Side length (waistband included)	106.00	106.50	107.00	107.50	108.00	108.50	109.00	109.50	110.00	110.50	111.00	111.50



WK743

Men's recycled performance work trousers

Colours information

Logistic  1  15

Sizes	Width (cm)	Height (cm)	Length (cm)	Net weight (kg)	Gross weight (kg)	Pieces/Box	Pieces/Bundle
-------	------------	-------------	-------------	-----------------	-------------------	------------	---------------

Taille fabricant	Pays-Bas	Italie	Portugal	Espagne	Royaume-Uni	Allemagne
36 FR	42 NL	40 IT	36 PT	36 ES	26 UK	42 DE
38 FR	44 NL	42 IT	38 PT	38 ES	28 UK	44 DE
40 FR	46 NL	44 IT	40 PT	40 ES	30 UK	46 DE
42 FR	48 NL	46 IT	42 PT	42 ES	32 UK	48 DE
44 FR	50 NL	48 IT	44 PT	44 ES	34 UK	50 DE
46 FR	52 NL	50 IT	46 PT	46 ES	36 UK	52 DE
48 FR	54 NL	52 IT	48 PT	48 ES	38 UK	54 DE
50 FR	56 NL	54 IT	50 PT	50 ES	40 UK	56 DE
52 FR	58 NL	56 IT	52 PT	52 ES	42 UK	58 DE
54 FR	60 NL	58 IT	54 PT	54 ES	44 UK	60 DE
56 FR	62 NL	60 IT	56 PT	56 ES	46 UK	62 DE
58 FR	64 NL	62 IT	58 PT	58 ES	48 UK	64 DE